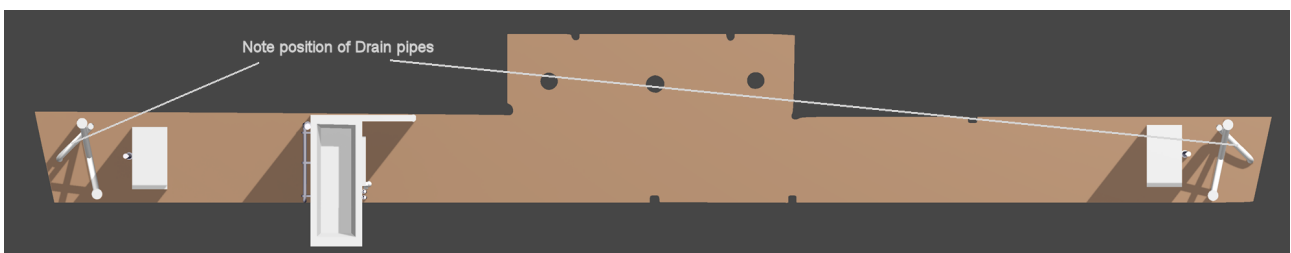
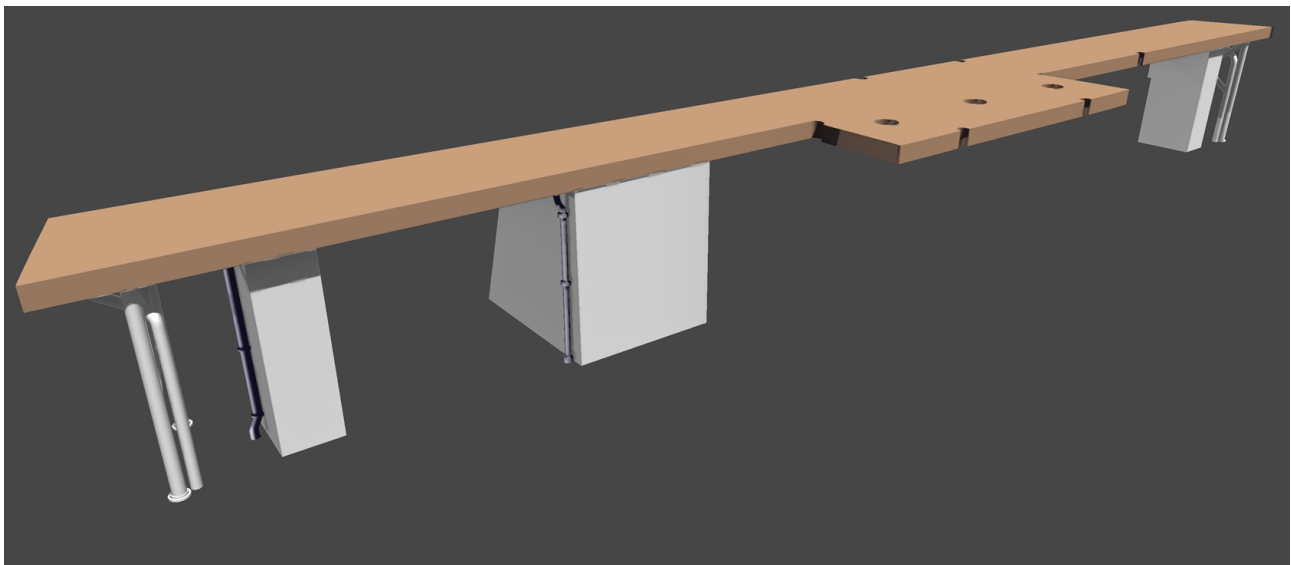
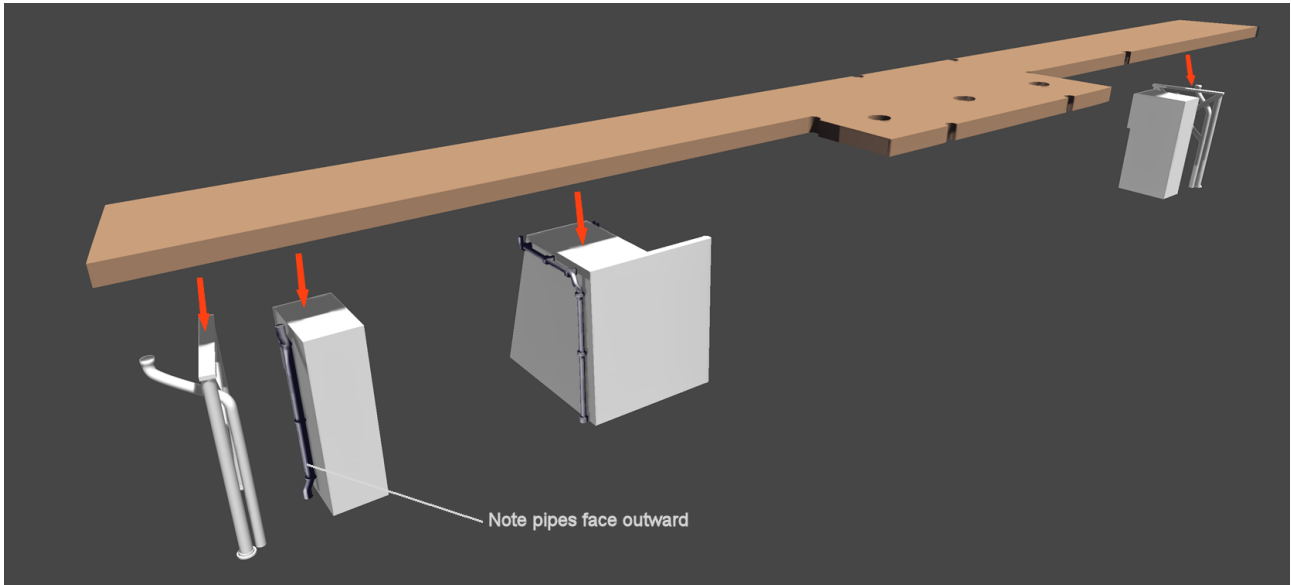


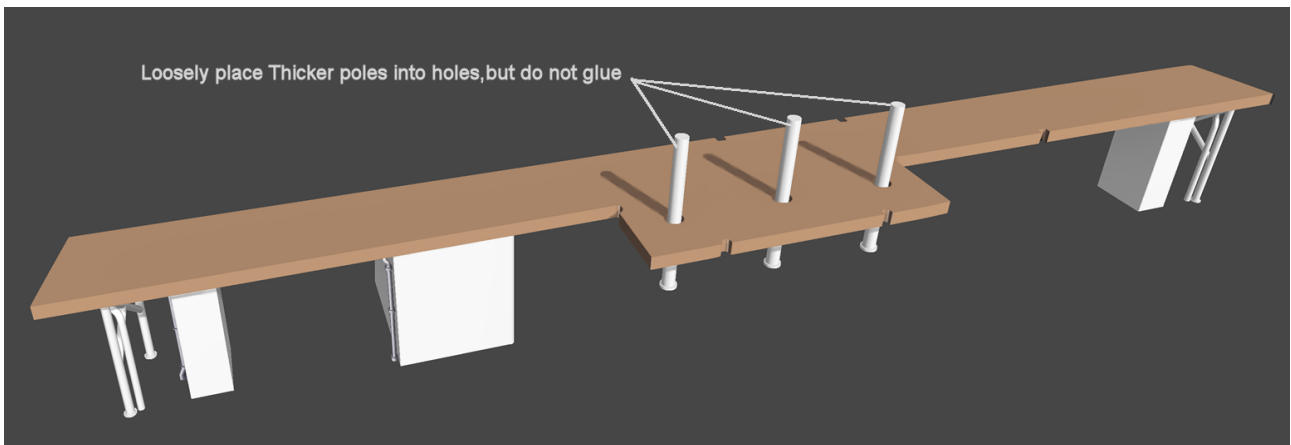
1/200 Docking Bridge instructions

Although the 1/400 & 1/350 versions of the stern have pre-printed docking bridges, the 1/200 version has a multi part bridge with a polybak bridge deck. The polybak deck is used because of its dimensional stability, larger resin prints of flat sheets can tend to warp and curve in some conditions, especially if the sheet is thin.

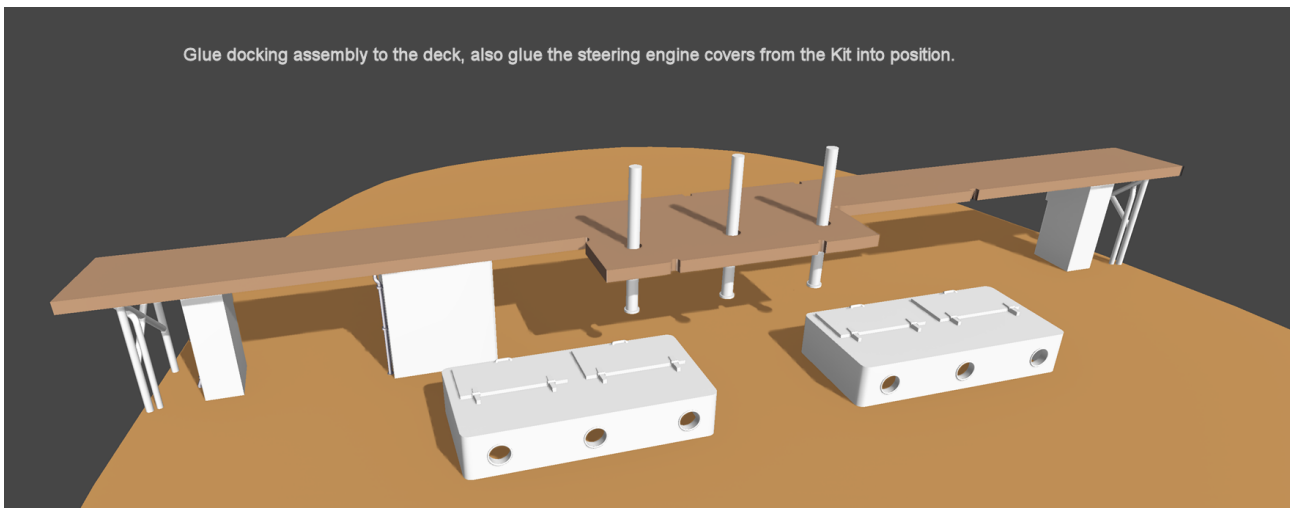
In order to get the best results, there is an order in which parts need to be assembled. The first job being to glue the main objects shown below to the underside of the playback deck. There are laser engraved marks on the underside to help with the positioning. The end pieces need to be properly aligned with the drain pipe towards the front of the deck and angling out to the sides.



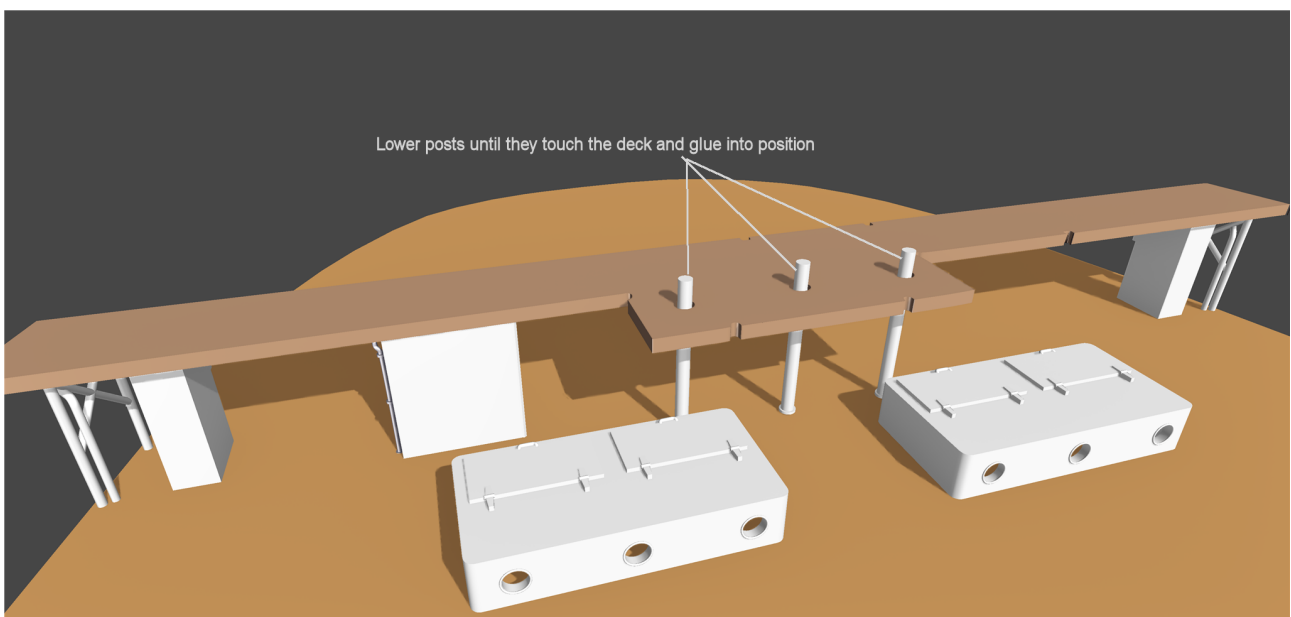
The next step is to insert the three thickest posts into the holes on the deck but do no glue yet.



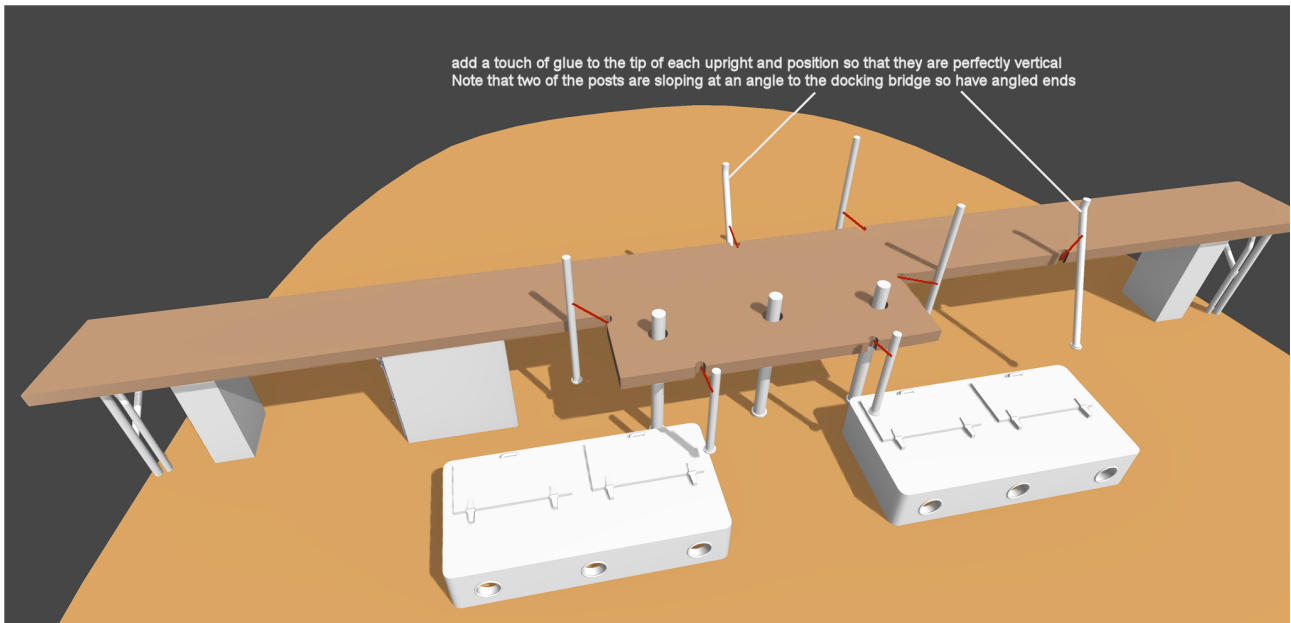
Glue the docking bridge assembly to the Stern Deck, and add the Steering engine covers from the kit.



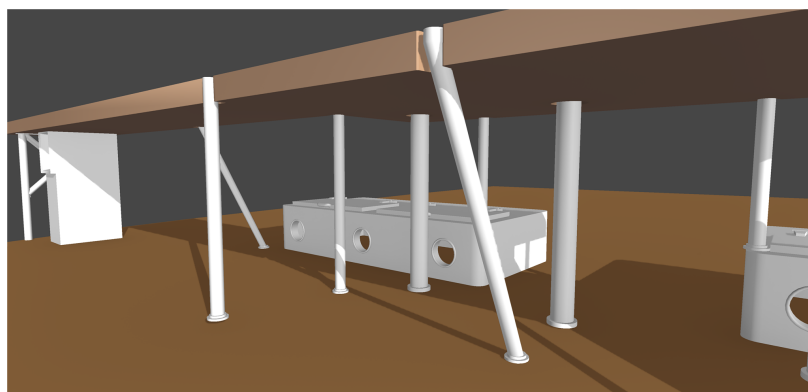
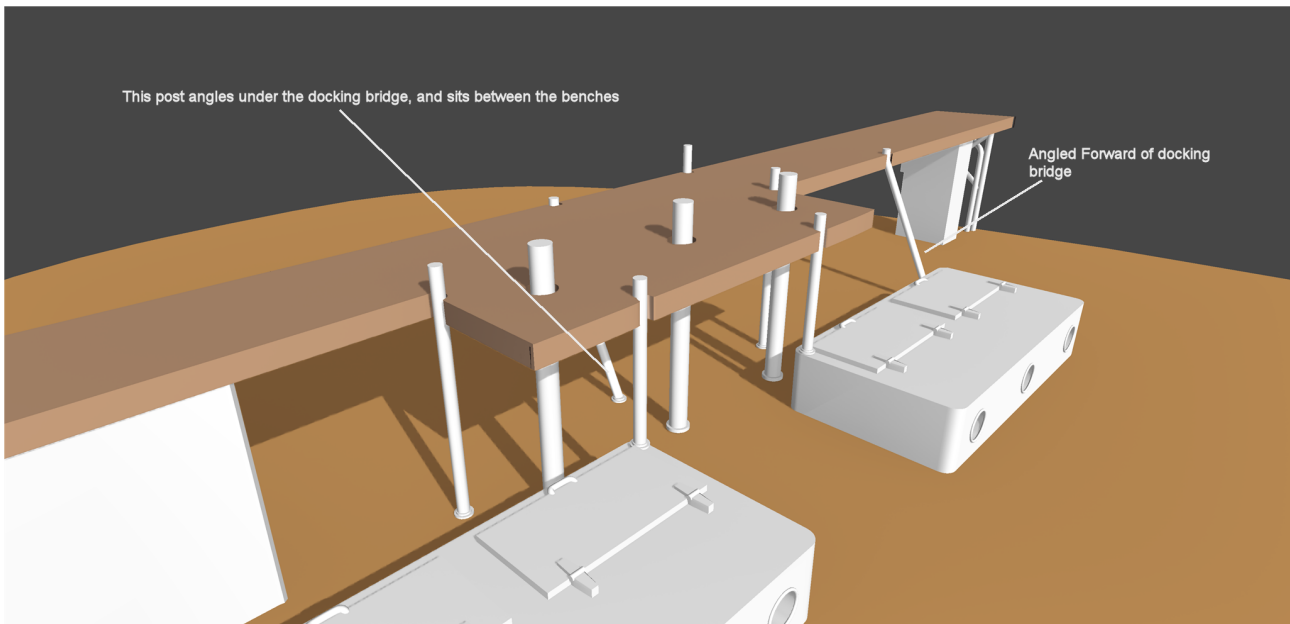
Add a drop of glue to the bottoms of the three posts and lower into position, ensuring the the posts are vertical.



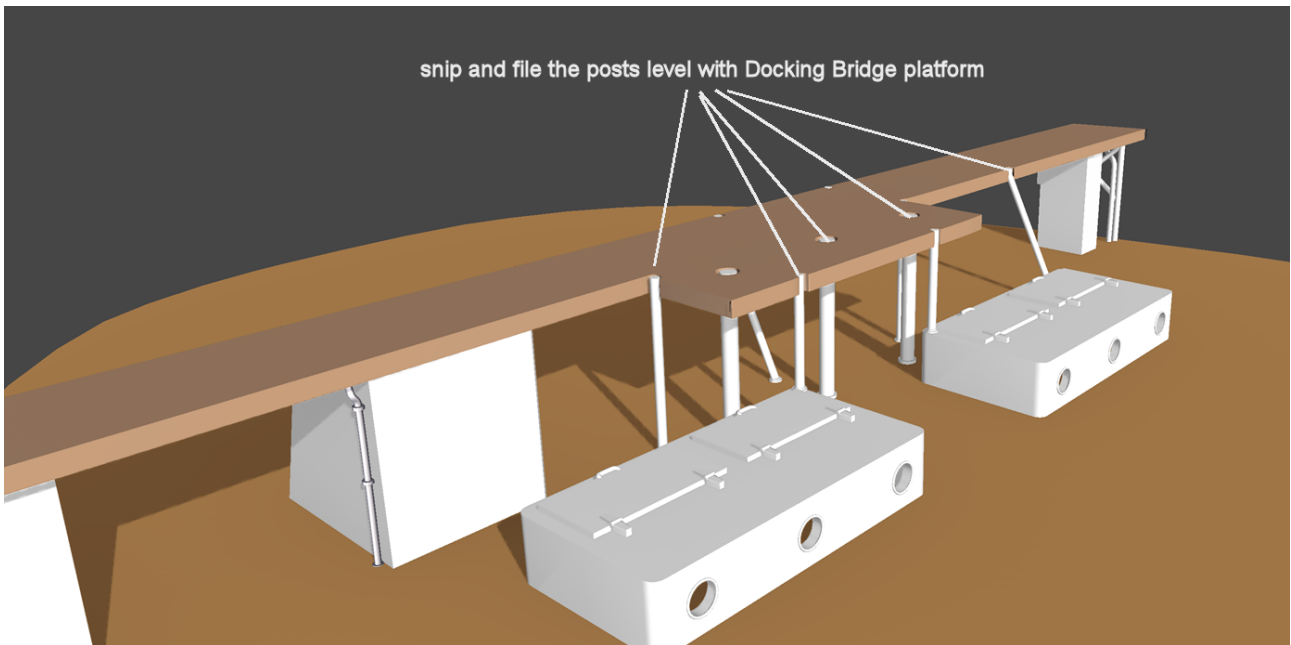
Now add the rest of the support posts using the etched notches to guide the positioning, most of the posts will be vertical but two are meant to be angled (they will have a bent end to them)



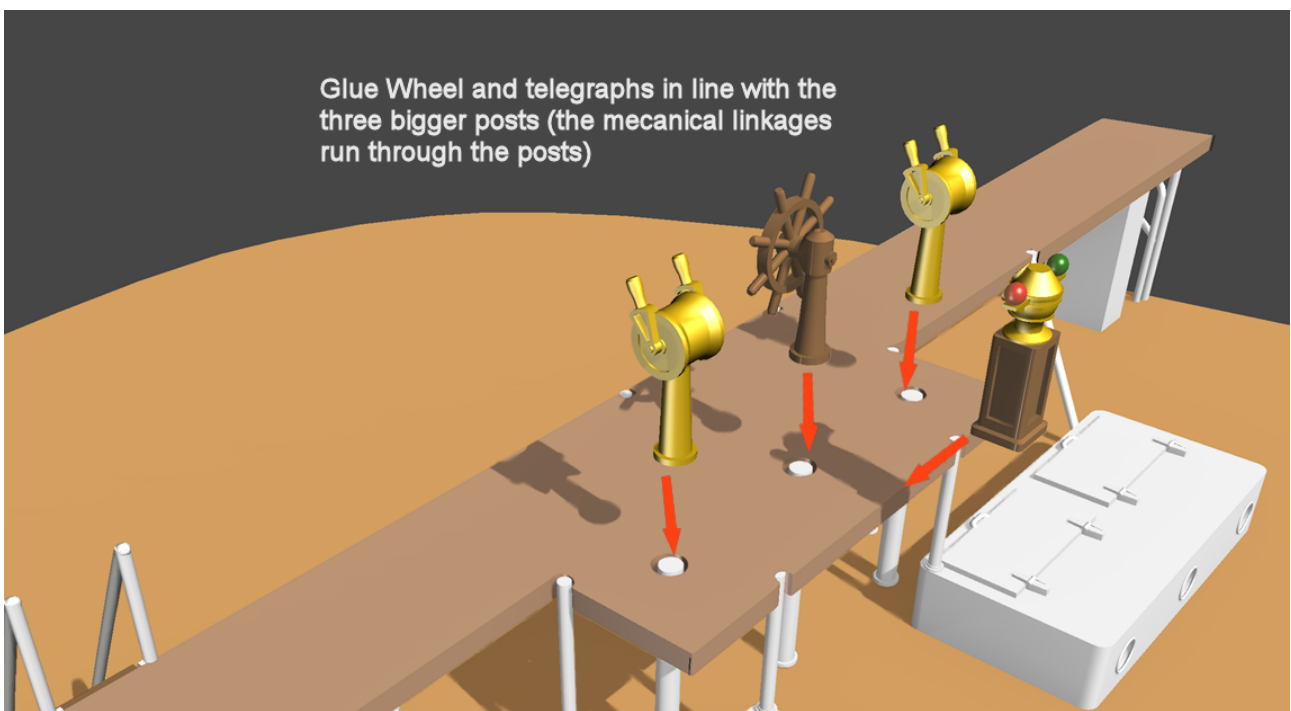
In the illustration below you can see the angled posts. Also note that the two shorter posts go to the front of the steering wheel extension, and the bottoms of these posts should sit on the steering engine covers (not on the deck) as seen below.



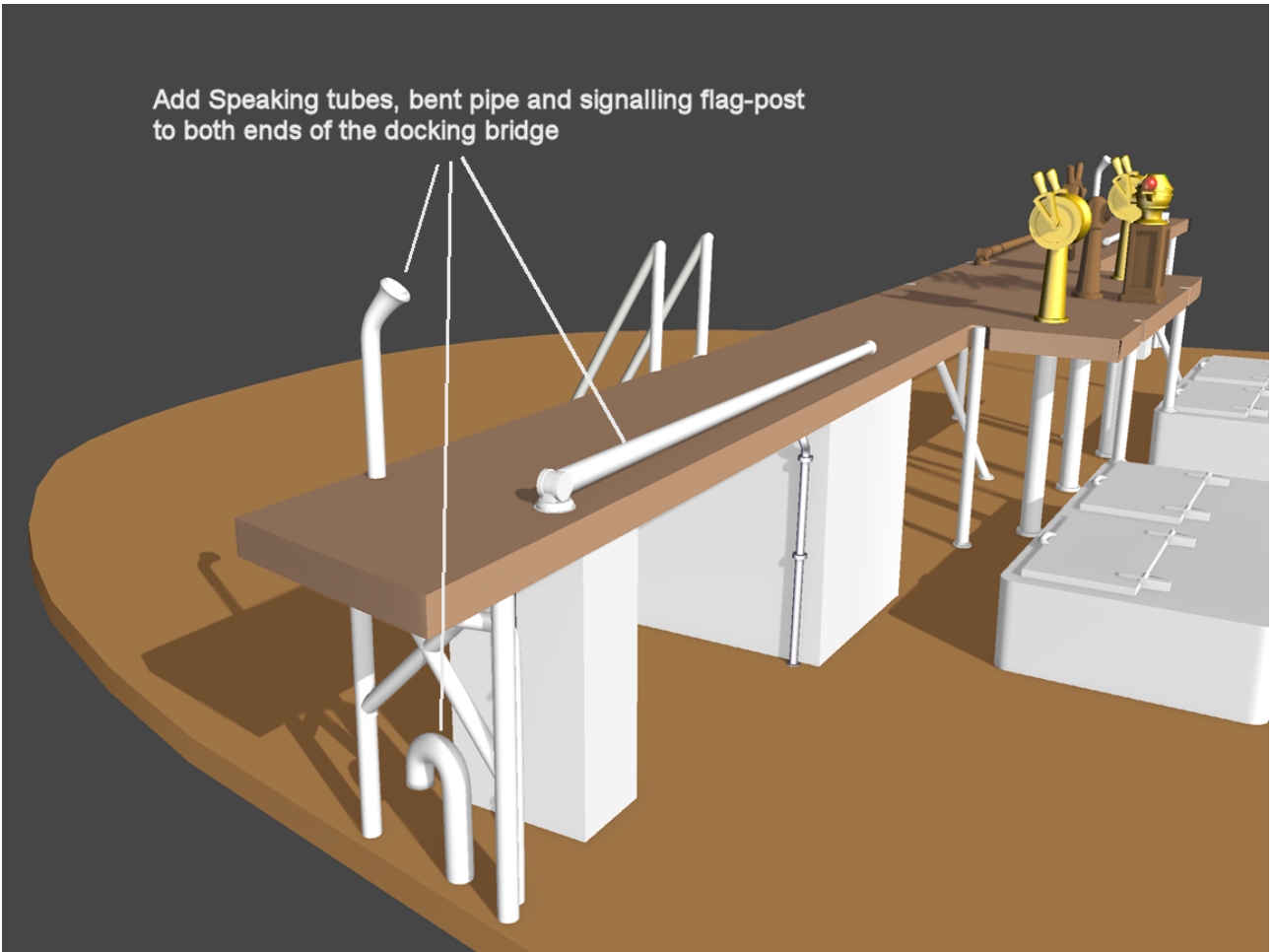
Once you are satisfied with the positions of the support poles, they can be snipped and sanded flush with the docking platform.



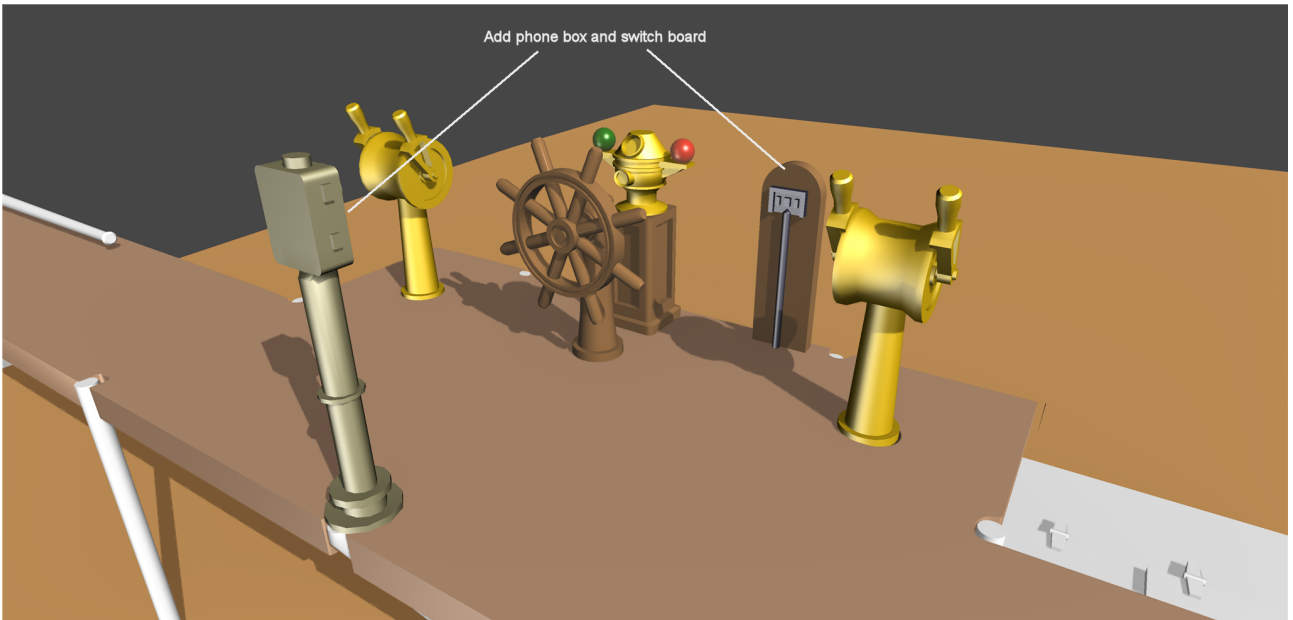
Now we are ready to start adding the details to the docking bridge as shown below, making sure the steering wheel and telegraphs are positioned over the three thicket posts:

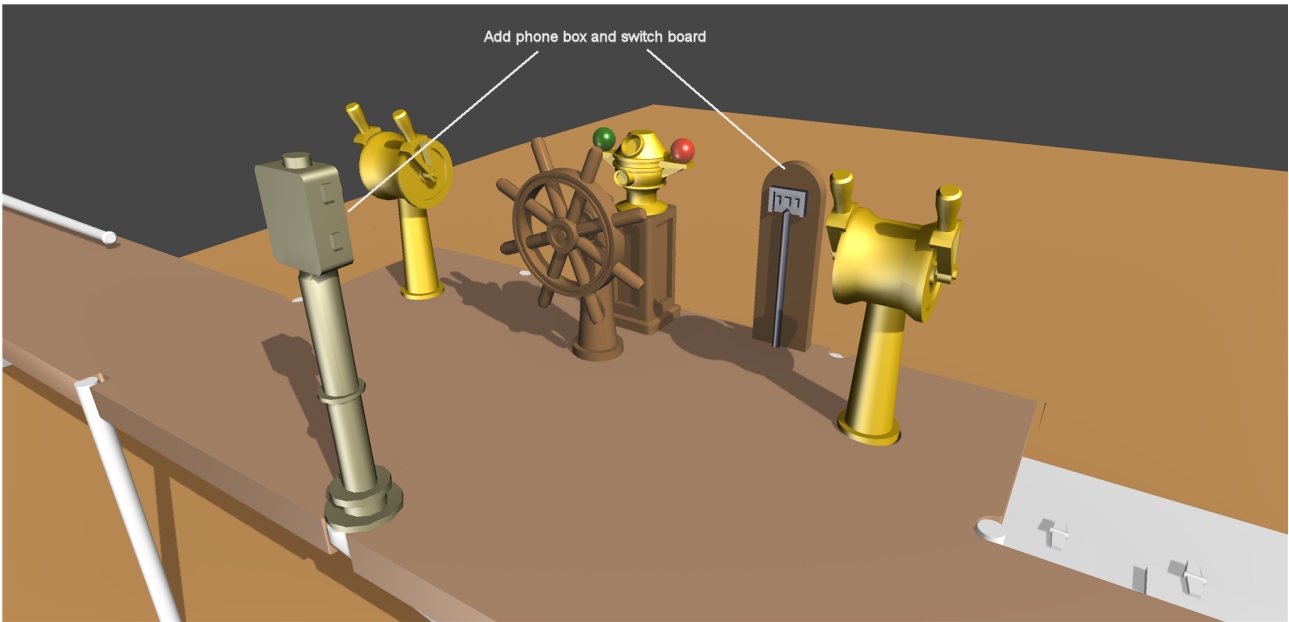


Add Speaking tubes, bent pipe and signalling flag-post to both ends of the docking bridge



Add phone box and switch board





Top View showing all bridge components in place:

